



Brock's Performance • 4064 E. Patterson Road • Dayton, OH 45430 • Phone: 937-912-0054 • Fax: 937-912-0062

## Suzuki GSX-R1000 (17-18) Predator Full Exhaust System Installation Instructions

The Brock's Performance Predator Full System for the Suzuki GSX-R1000 is a high-performance full exhaust system that replaces the OEM muffler, catalytic converter, and head pipes.

### Check Package Contents:

#### The Package Contents Include:

1. One (1) Predator Muffler
2. Four (4) Head Pipes
3. Three (3) Collectors
4. One (1) Intermediate Pipe
5. One (1) Oxygen Sensor Extension
6. One (1) Package Containing Hardware
7. One (1) Package Containing Instructions



If your package contents differ, please contact Brock's Performance at 937-912-0054.

### OEM Exhaust Removal:

1. Support bike using a wheel stand or lift.

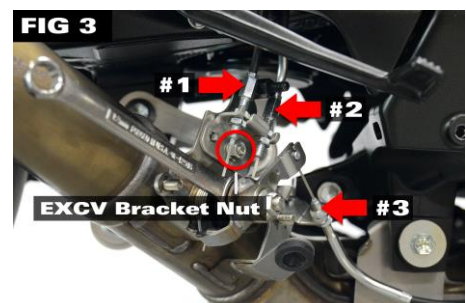
**Note:** For steps 2 through 6 refer to OEM service manual.

2. Remove left and right side frame front covers.
3. Remove driver and passenger seats.
4. Remove under center cowling.
5. Remove left and right side fairings.
6. Remove outer rear fender section.
7. Loosen clamp securing muffler to OEM front section. (Fig 1)
8. Remove bolt and nut securing OEM muffler to rear footpeg. (Fig 1)
9. Remove OEM muffler.
10. Remove three (3) acorn nuts securing the EXCV cover and remove EXCV cover. (Fig 2)
11. Loosen jam nuts for EXCV cables #1 and #2. (Fig 3)
12. While using a wrench to hold the EXCV shaft, remove EXCV cables #1 and #2. (Fig 3)

**Caution:** Do not rotate EXCVA pulley during removal (damage may occur).

13. Remove EXCV bracket nut and remove bracket. (Fig 3)
14. Remove EXCV cables #1 and #2 from the plastic clip located on the inside of the right side rearset. (Fig 4)
15. Remove EXCV cable retaining clip and remove EXCV cables #1 and #2 from EXCVA pulley. (Fig 5)
16. Remove EXCVA pulley bolt and remove EXCVA pulley. (Fig 5)
17. Remove bolt securing EXCV cable #3 to oil pan. (Fig 6)
18. Disconnect oxygen sensor and remove. (Fig 7)

19. Remove bolt securing L-bracket to the oil cooler, loosen bolt



securing L-bracket to the engine block. (Fig 8)

20. Remove eight (8) head bolts. (Fig 9)

**Note:** Place cardboard around radiator to prevent damage to aluminum fins during removal.

21. Support OEM front section and remove bolt securing to chassis. (Fig 6)
22. Remove OEM front section from the left side of the bike.

### Predator Exhaust Installation:

**Note:** Before installing the performance exhaust system, preassemble all components to check fitment. Apply WD-40® to the pipe joints to ease assembly, adjustment, and disassembly.

23. Inspect OEM exhaust gaskets for any damage. Replace as needed.
24. Install mounting flanges and collars to the engine block and secure hand tight with eight (8) head bolts removed in step 20. (Fig 10)
25. Install head pipes 1, 2, 3, and 4.

**Note:** Cylinder #1 is on the left side of the bike.

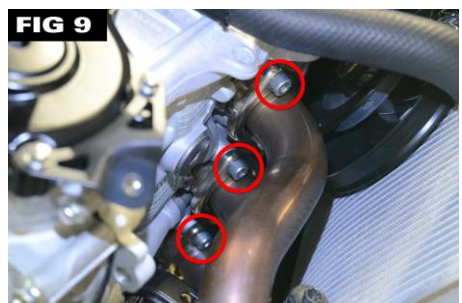
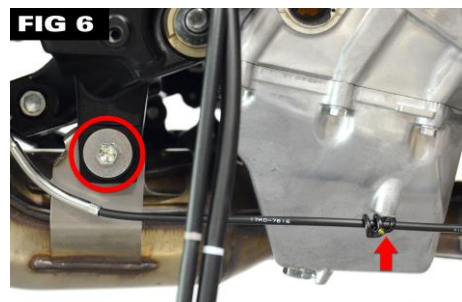
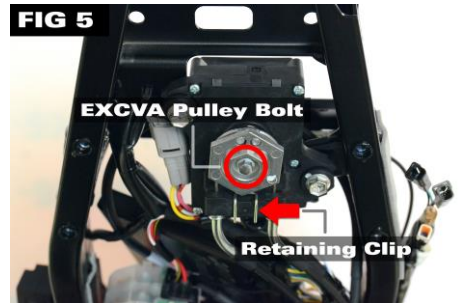
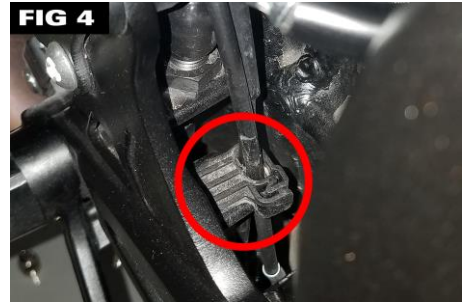
26. Install collectors A, B, and C.
27. Install intermediate pipe.
28. Install muffler with bolt and nut removed in step 8 hand tight. (Fig 11)
29. Wiggle entire system to ensure pipes are fully seated.
30. Install intermediate pipe mounting bracket reusing the bolt from step 21, along with supplied bolt and nuts hand tight. (Fig 12)
31. Install one (1) spring to each head pipe to secure to mounting flange. (Fig 13)

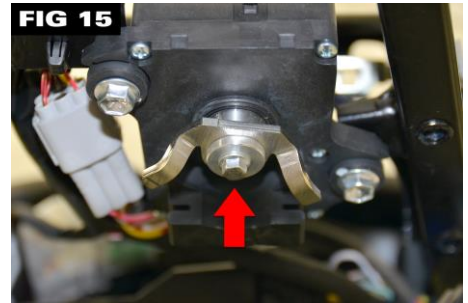
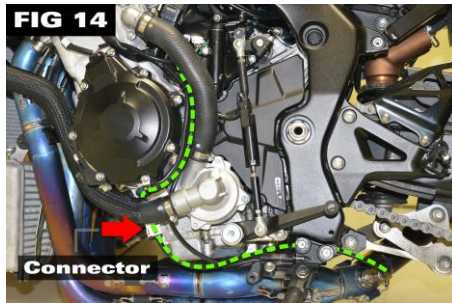
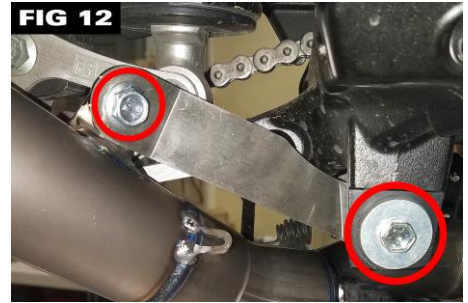
**Note:** Install two (2) springs to each head pipe for high power applications.

32. Install eight (8) springs to secure the collectors to the head pipes and intermediate pipe.
33. Install two (2) springs to secure the muffler to the intermediate pipe.
34. Torque eight head bolts to 17.0 lb.-ft (23 N·m).
35. Torque muffler mounting bolt and nut to 22.5 lb.-ft (30 N·m).
36. Torque intermediate pipe mounting bracket bolts to 17 lb.-ft (23 N·m).
37. Install bolt from step 19 to secure the L-bracket to the oil cooler. Torque L-bracket bolts to 7.5 lb.-ft (10 N·m).

**Note:** If the bike is equipped with a BrockFLASH ECU or Dynojet PCV, removal of the OEM oxygen sensor is required for optimum performance. Block off plugs are included.

38. Apply nickel based anti-seize to oxygen sensor threads and adapter. Torque to 18.5 lb.-ft (25 N·m).
39. Install oxygen sensor extension harness and secure away from any moving parts. (Fig 14)
40. Install valve simulator and spacers as shown. Secure with EXCVA pulley bolt from step 16. Torque to 3.7 lb.-ft (5 N·m). (Fig 15)
41. Remove stickers from head pipes and collectors, wipe down entire exhaust system with rubbing alcohol.
42. Reinstall body panels and seats removed in steps 2 through 6.





**DO NOT START BIKE UNTIL YOU HAVE ENSURED A MINIMUM 1/4-INCH CLEARANCE BETWEEN THE EXHAUST COMPONENTS AND ALL BODYWORK/PARTS.**

- Failure to ensure proper clearance may result in burned plastic. Brock's Performance exhaust systems are designed to provide appropriate clearances. If minimum clearances are not obtained, remove the springs on the exhaust system and adjust until proper clearance is achieved.
- It is recommended that the entire exhaust system be wiped down with **rubbing alcohol** to remove oil and fingerprints before starting the bike. This will help prevent tarnishing of the finish after the bike has been started and the exhaust has heated up.
- **Fender eliminator kits recommended on some models; see BrocksPerformance.com for more details.**



**CONGRATULATIONS! INSTALLATION IS COMPLETE.**

**All Brock's Performance products are designed for closed-course racetrack use ONLY!**

For more information on Brock's Performance Warranty and Terms and Conditions: [www.BrocksPerformance.com](http://www.BrocksPerformance.com)  
> About Us > Terms and Conditions

For Questions and Comments: [www.BrocksPerformance.com](http://www.BrocksPerformance.com) > Customer Service > Contact Us  
or call the Tech Line 937-912-0054