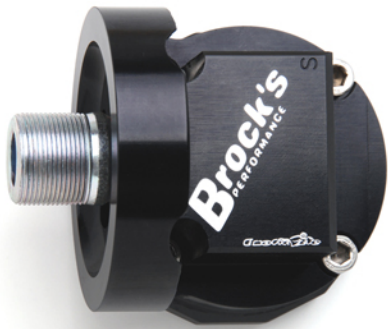




Brock's Performance Products • 4064 East Patterson Road • Dayton, OH 45430 • Phone: 937-912-0054 • Fax: 937-912-0062

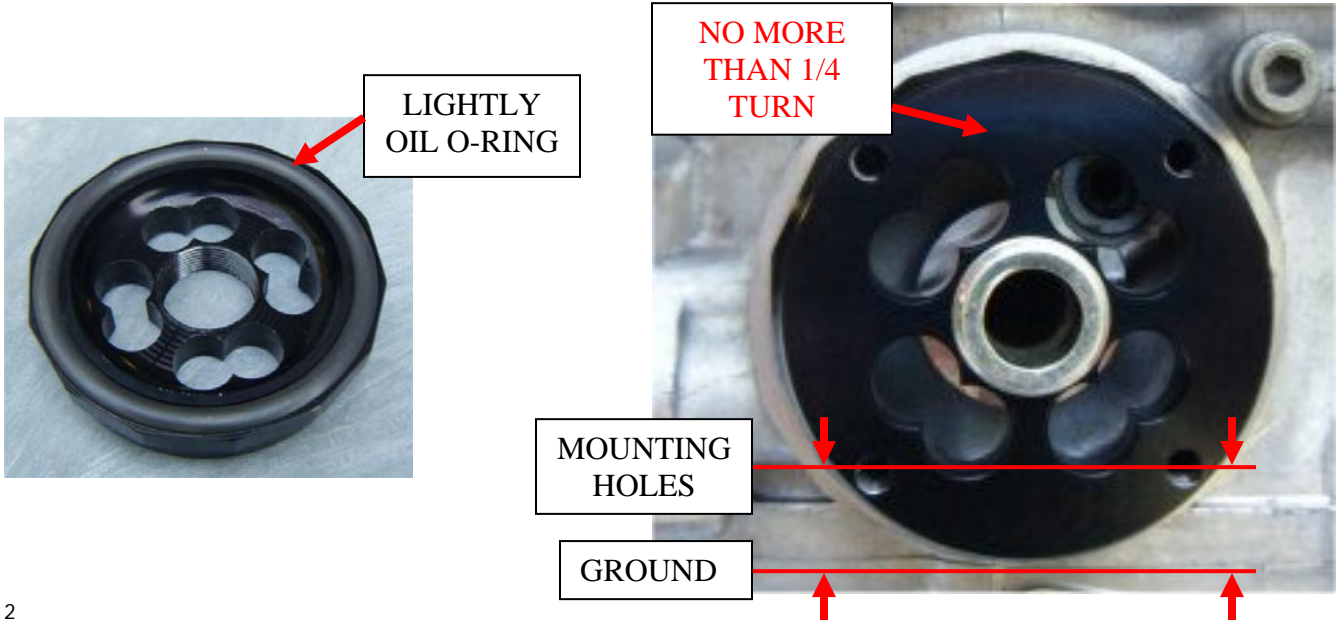
Oil Filter Relocator Mounting Instructions



Brock's Performance oil filter relocator kits are available for Suzuki and Kawasaki models. The pictures here may not represent your model, but installation is the same for all models.

It is recommended to install oil filter relocator kit when performing an oil change.

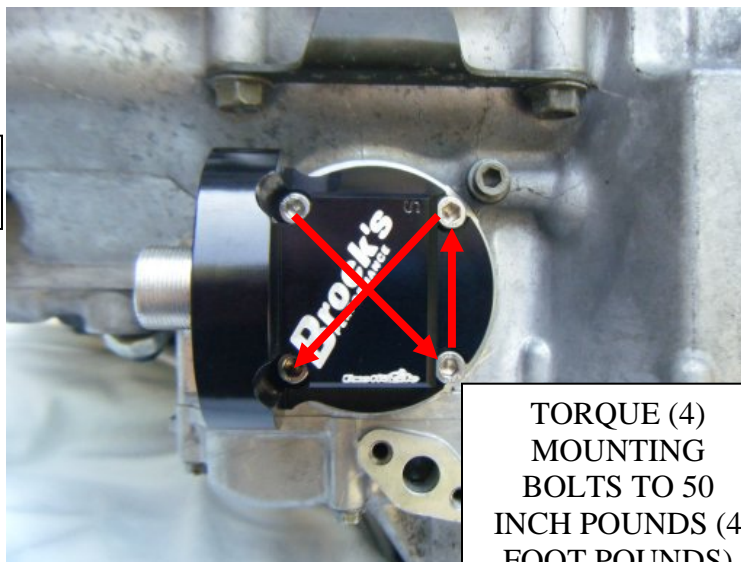
1. Drain oil from engine and remove oil filter (See your owner's manual for procedure). Clean mounting surfaces thoroughly.
2. Disassemble oil filter relocator (it is shipped in this manner to prevent shipping damage).
3. Make sure the mounting base o-ring is in the groove and apply a small amount of clean oil to o-ring. Install with mounting holes parallel to ground (bike up straight). **CAUTION: DO NOT TIGHTEN OVER 1/4 TURN AFTER O-RING CONTACTS THE MOUNTING SURFACE.**



4. Make sure the oil filter adapter o-ring is in the groove, a small amount of clean oil on o-ring will help hold it in. Install in position necessary for clearance, torque bolts equally in a cross pattern to **50 inch pounds** (4 foot pounds). Allow minimum of 1/8 inch clearance between oil filter and exhaust pipes.



O-RING IN GROOVE



TORQUE (4)
MOUNTING
BOLTS TO 50
INCH POUNDS (4
FOOT POUNDS)

5. Install oil filter and refill engine with oil (See your owner's manual for procedure).
6. Start engine and check for oil leaks.

WARNING: IMPROPER INSTALLATION MAY RESULT IN OIL LEAKS WHICH MAY DAMAGE ENGINE OR CAUSE AN ACCIDENT. ALWAYS CHECK FOR LEAKS AFTER WARMING ENGINE. BROCK'S PERFORMANCE PRODUCTS WILL NOT BE RESPONSIBLE OR LIABLE FOR ANY INJURY OR DAMAGE CAUSED BY IMPROPER INSTALLATION, MISUSE, OR USE OF THIS PRODUCT FOR ANY OTHER PURPOSE.

Brock's Performance Products are designed for Closed-Course Racetrack use ONLY!

For more information go to www.BrocksPerformance.com, **click:** Installation Instructions

email: Advice@brocksperformance.com or call the office at 937-912-0054

Brock's Performance Products policies and warranty information: www.BrocksPerformance.com, **click:** Policies