



Brock's Performance Products • 4064 East Patterson Road • Dayton, OH 45430 • Phone: 937-912-0054 • Fax: 937-912-0062

Installation Instructions ZX-10R (06-07) Alien Head Exhaust System

CHECK PACKAGE CONTENTS

1. Four (4) Header Mount Flanges (Installed in Headers)
2. One (1) Left Side Header (Cylinders 1 & 2)
3. One (1) Right Side Header (Cylinders 3 & 4)
4. One (1) Collector
5. One (1) Alien Head Megaphone
6. One (1) Package Containing Springs, Spring Puller, Bracket, Lower Cover, and Hardware
7. One (1) Black Rubber Cap (Not Shown)
8. One (1) Instruction Package

If any parts are missing, contact Brock's Performance Products.



Brock's Performance Alien Head

PRE-ASSEMBLE HEADERS AND COLLECTOR TO ENSURE PROBER FIT BETWEEN ALL PARTS

Brock's Performance carefully inspects each system prior to shipping, we recommend that you test fit your system prior to installation. Apply WD-40 to the joints to ease assembly, adjustment, and/or disassembly.



REMOVE BODYWORK

Remove body work by removing fasteners. Start with all of the Allen Head bolts, then the plastic fasteners on the front and bottom of bike (behind the front tire). Start at the bottom and work your way up. After the bottom is loose, you may need to lift up on the bottom almost like a "wing" to remove the top. Be very careful not to break any tabs off while doing this. Once either side is off continue in the same fashion to the other side. The seat and tail section will need to be removed to access the muffler mounts and exhaust valve control. Remove the side covers below the seat and then remove the seat. Remove the plastic fasteners and screws from the tail section. Lift the tail section up to disconnect it, set it forward on the frame to access the muffler mounting bolts. It is not necessary to disconnect the wiring of the tail lights.

REMOVE THE MUFFLERS

Remove the three (3) bolts securing the swingarm lower cover. Loosen the clamp bolts for the left muffler and middle pipe. The clamp bolts only needs to be loosened not removed. Remove the four (4) mounting nuts and one (1) bolt from each muffler and remove mufflers. Slide the rear exhaust pipe from middle pipe. Disconnect the exhaust butterfly valve cables from the motor pulley by loosening cable adjusters and releasing the cable ends from the pulley (located

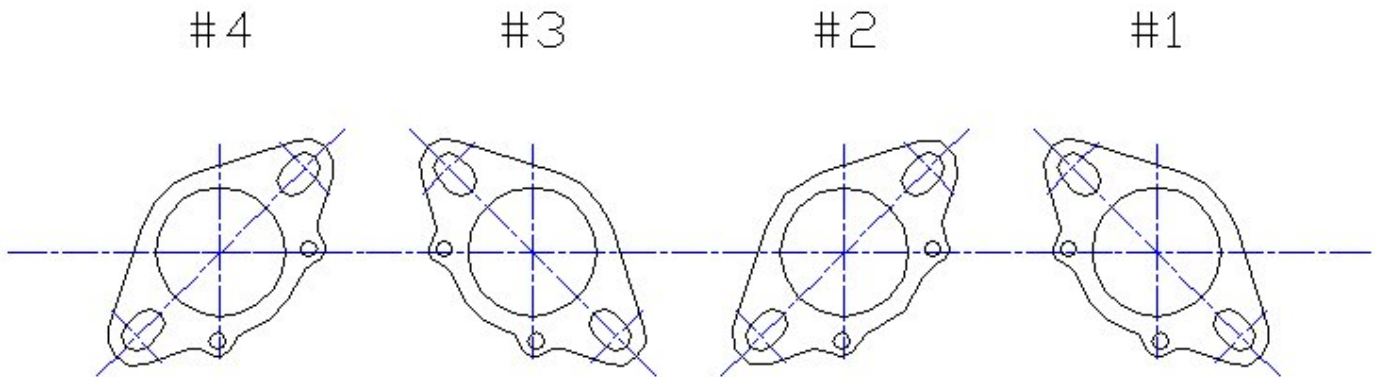
under the seat). Remove the bolt holding the middle pipe to the frame and slide the middle pipe with cables from the front pipe. You may need to apply a little twisting force when removing the pipes.

REMOVE THE HEAD PIPES

Remove the lower radiator mounting bolt. You can gently push the radiator forward to make room for the removal of the headers. Remove all eight (8) of the nuts holding the four primaries to the head and remove head pipes. *Be careful not to hit the flanges of the pipes on the radiator*, placing a piece of cardboard between the head pipes and the radiator will help in this area for protection. Check to make sure the exhaust gaskets are still in the head, do not remove, you will reuse these.

INSTALL FLANGES

Remove the flanges from the headers. Using the eight (8) nuts from the original flanges, attach the flanges with the larger flared side against the gaskets in the cylinder head and aligned as shown. Make sure flanges are flat to the gaskets and tighten flanges to 10-15 ft-lbs to promote a proper seal.



INSTALL HEAD PIPES

Apply a small amount of Permatex Ultra Copper to inside of the header pipes. Install the head pipes onto the flanges while making sure not to hit the radiator and oil cooler. After one side of the primaries are installed, attach the springs to the tabs on the head pipes. Then repeat to the other side. Make sure the radiator as well as other hoses have clearance from the head pipes.



INSTALL COLLECTOR

Install the collector to the head pipes with two (2) supplied springs. Once the springs are on, give the collector a good wiggle so it can seat against the head pipes.

INSTALL SWINGARM LOWER COVER

Remove the right foot peg assembly from the frame. Install the supplied cover plate to the swingarm using the bolts removed from the original cover.

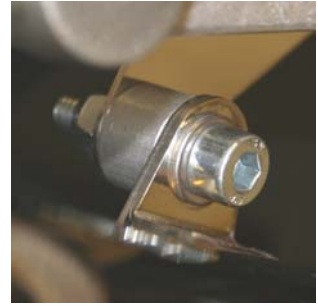


INSTALL BRACKET AND MUFFLER

Replace the two (2) bolts that secure the right foot peg to the frame with the supplied longer bolts and washers. Slide the spacers and bracket onto the bolts and install onto frame. *Make sure the small end of the spacers are inserted into the foot peg bracket.*



Install the Alien Head Muffler by using the supplied spacer, bolt, washers, nut, and springs. The tab on the Alien Head is in front of the mounting bracket with the spacer between them. Re-check all fasteners of system to make sure everything is tightened properly.



CLEAN SYSTEM OF FINGER PRINTS

With any exhaust system you must clean all finger prints off before starting the motorcycle to insure there will not be finger prints "burned" into the pipe. Carefully use alcohol, brake clean, etc. to clean the system.

RE-ATTACH RADIATOR MOUNT

Install the lower radiator bracket bolt that was removed earlier and tighten.

INSTALL BODYWORK AND CHECK CLEARANCE

The lower bodywork next to the collector pipe will need to be trimmed. Cut small amounts from the plastic until the desired clearance is achieved. Replace all bodywork and check clearance. *Bodywork must be at least 1/4 of an inch from any part of the exhaust system.* Brock's Performance does not warrant burned plastic.



ADDITIONAL

Review document for PAIR valve modification.
Install the appropriate Power Commander map for your application.



Brock's Performance Products are designed for Closed-Course Racetrack use ONLY

For more information go to www.BrocksPerformance.com, **click:** Installation Instructions

email: Advice@BrocksPerformance.com, or call the office at 937-912-0054

Brock's Performance Products policies and warranty information: www.BrocksPerformance.com, **click:** Policies



Brock's Performance Products • 4064 E. Patterson Road • Dayton, OH 45430 • Phone: 937-912-0054 • Fax: 937-912-0062

PAIR Block-Off Cap (Black) Installation Instructions for ZX-10R (06-07)

The PAIR block-off cap is used to block off emissions (PAIR) to help prevent 'deceleration pop' and also prevents ram-air pressure loss from the air box after blocking the PAIR. It will be necessary to lift the air box up to access the PAIR valve hose. Refer to a factory service manual for more detailed information.

1. Lift and prop gas tank.
2. PAIR valve hose location is under the air box on the air box holder. See figure 1.
3. Remove air box cover, air filter, and velocity stacks from inside air box. *Be very careful to not drop anything into the throttle bodies, debris can destroy your engine. Cover throttle bodies with clean rags.* Disconnect sensor from the rear of air box. See figure 2.
4. Remove hoses from rear of air box. See figure 3.
5. Disconnect air ducts from front of air box and rotate the air box counterclockwise to remove.
6. Remove PAIR valve hose from port and press the CAP one inch into the hose. Wet cap a little with Windex and use a 3/8" drive extension to push in. See figure 4, 5, & 6.
7. Push hose onto port of air box. See figure 7.
8. Reinstall air box and components from steps 3 to 5.

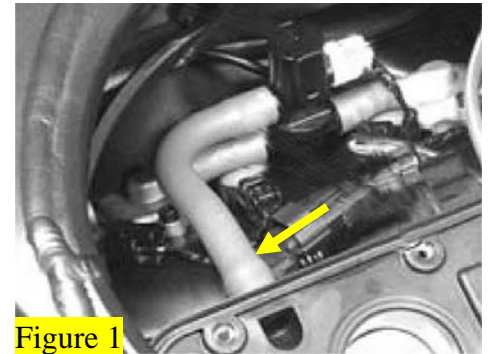


Figure 1

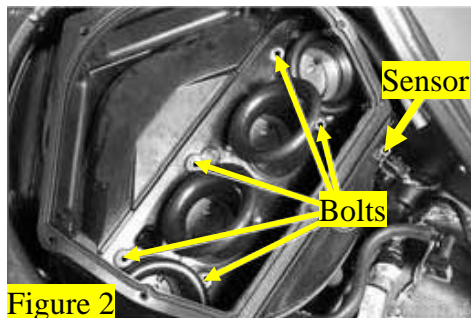


Figure 2

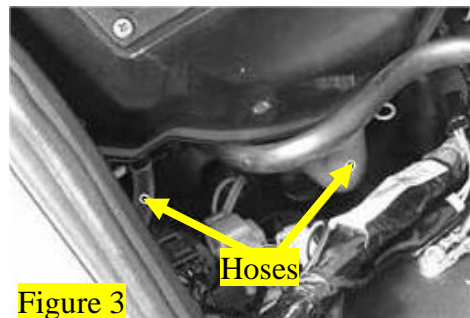


Figure 3

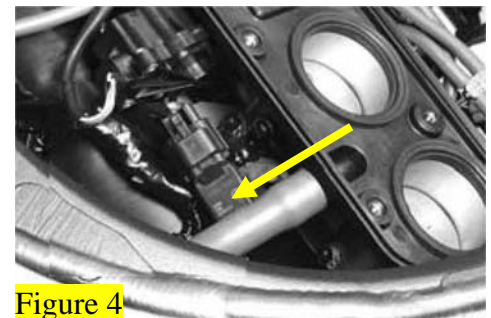


Figure 4



Figure 5



Figure 6

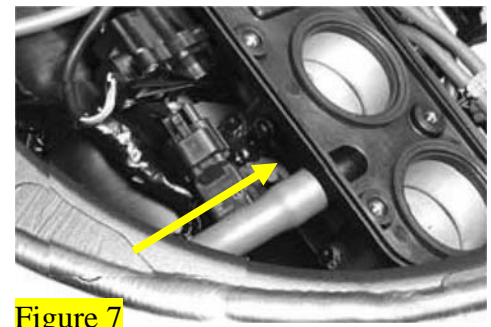


Figure 7

Brock's Performance Products are designed for Closed-Course Racetrack use ONLY

For more information go to www.BrocksPerformance.com, **click:** Installation Instructions

email: Advice@BrocksPerformance.com, or call the office at 937-912-0054

Brock's Performance Products policies and warranty information: www.BrocksPerformance.com, **click:** Policies