

VESPA GAV/GEV SCOOTER MOUNTING INSTRUCTION

bitubo
RACE SUSPENSION



QUALITY SYSTEM CERTIFICATED
UNI EN ISO 9001:2008
50 100 9149

Code: PV041 GAV/GEV

Rev. 01

del 27/10/2017

Mod. ISTR. MONT. GAV

Pag. 3/6



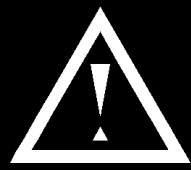
SERIAL N.

(SEE PAGE 1)

TO BE MENTIONED IN CASE OF CLAIM

FIRST YOUR SAFETY !

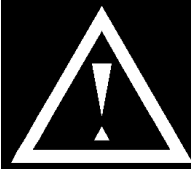
WARNING !



The rear Shocks are important components of the scooter and this manual describes the correct way to assemble it.

NOTE: The Rear Shocks must be installed exclusively in a specialised workshop; if you have any doubts regarding these instructions, please contact a Bitubo engineer straight away.

WARNING !



Bitubo cannot be held responsible for any modifications to the Rear Shocks not described in this handbook or not authorised in writing. Moreover Bitubo cannot be held responsible for the incorrect installation of shock absorber.

Read this handbook carefully so that you can get the best performance and efficiency out of the Shock absorbers.

NOTE: The warranty for the Shock absorbers will be invalidated by incorrect installation or modifications carried out without Bitubo's written authorisation.

Bitubo cannot be held responsible for any damages to the product or injuries to people if the instructions of this handbook are not followed to the letter or if the shock absorbers is not fitted in a specialised workshop or by qualified personnel.

BITUBO RECOMMENDS



Pictures and notes reported are purely as an indications; C.d.a. Bitubo reserves the faculty to make any modification or changes.

MOUNTING INSTRUCTIONS

- 1) Place the scooter on central stand, in order to rise the front wheel.
- 2) To remove the original shock absorber and the original vehicle parts, follow the instructions reported in the service manual provided by the producer of the vehicle.
- 3) Remove the original shock absorbers.
- 4) Prepare the Bitubo shock as follows:

WARNING:

- Place the BITUBO washer as shown on the photo.



PHOTO 1

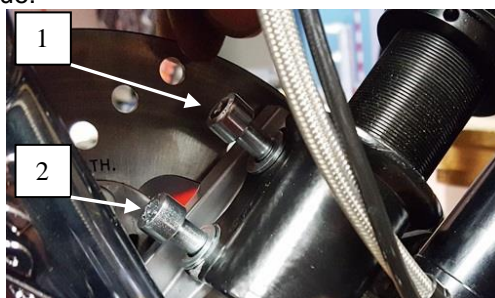
- Insert the PIAGGIO original parts following the dismounting order (rubber washer - thrust bearing - rubber washer - washer - knurled washer).

PHOTO 2



- 5) Mount the Bitubo shock absorber following the instructions reported in the service manual provided by the producer of the vehicle.
- 6) Remove the central support, in order to lower the front wheel to the ground, then tighten the bolts of the lower clamp of the shock absorber, following the tightening sequence 1-2-1-2, applying the following preset tightening torque:

- 10÷12 Nm
- 15÷17 Nm



- 7) Then apply the closing torque (20÷22 Nm) following the tightening sequence 1-2-1-2, so often that no play is existing between shock absorber and the support.
- 8) Mount all the original components, following the instruction reported in the service manual provided by the producer of the vehicle.
- 9) After a brief running in (about 50 km), verify again the correct torque, following the instruction reported in point 6)-7).

NOTE: for the setting of the shock absorber BITUBO, see the Setting Manual