



Blackstone TEK

BMW TPMS Installation Guide

Conducted by: D.S. Hawken

Approved by: F.A. Agostinho

Contents

1. Introduction.....	3
2. Method	3

1. Introduction

This installation guide will showcase the correct method for installing the Schrader Tyre Pressure Monitoring Sensor, further referenced as TPMS sensor, that is installed on the OEM BMW wheels onto the BST carbon fibre wheels for the BMW motorcycle.

2. Method

- 1.) Remove the TPMS sensor and retaining bolt from the OEM installed wheel.



Figure 1: Schrader TPMS Sensor



Figure 2: TPMS Retaining Bolt

2.) Remove the OEM valve from the side of the Spoke on the OEM wheel.



Figure 3: OEM valve

3.) Remove the aluminium valve from the BST wheel, by removing the retaining nut from the valve.



Figure 4: Aluminium Valve on Wheel



Figure 5: Aluminium valve

- 4.) Place a small bead of clear silicon to the flat surface of the TPMS mounting face.



Figure 6: TPMS Mounting Face

- 5.) Apply a Loctite compound 2701 to the thread of the TPMS retaining bolt
- 6.) Place the supplied O-ring into the groove of the valve adaptor. O ring dimension are as follows
ID = 11.30 mm, thickness = 2.30 mm



Figure 7: TPMS valve adaptor O ring groove

8.) Assemble the valve from the OEM wheel onto the valve adaptor



Figure 8: OEM Valve assembled onto adaptor

9.) Place the assembled valve adaptor into the drilled hole in the rim of the carbon wheel as indicated in the images below.

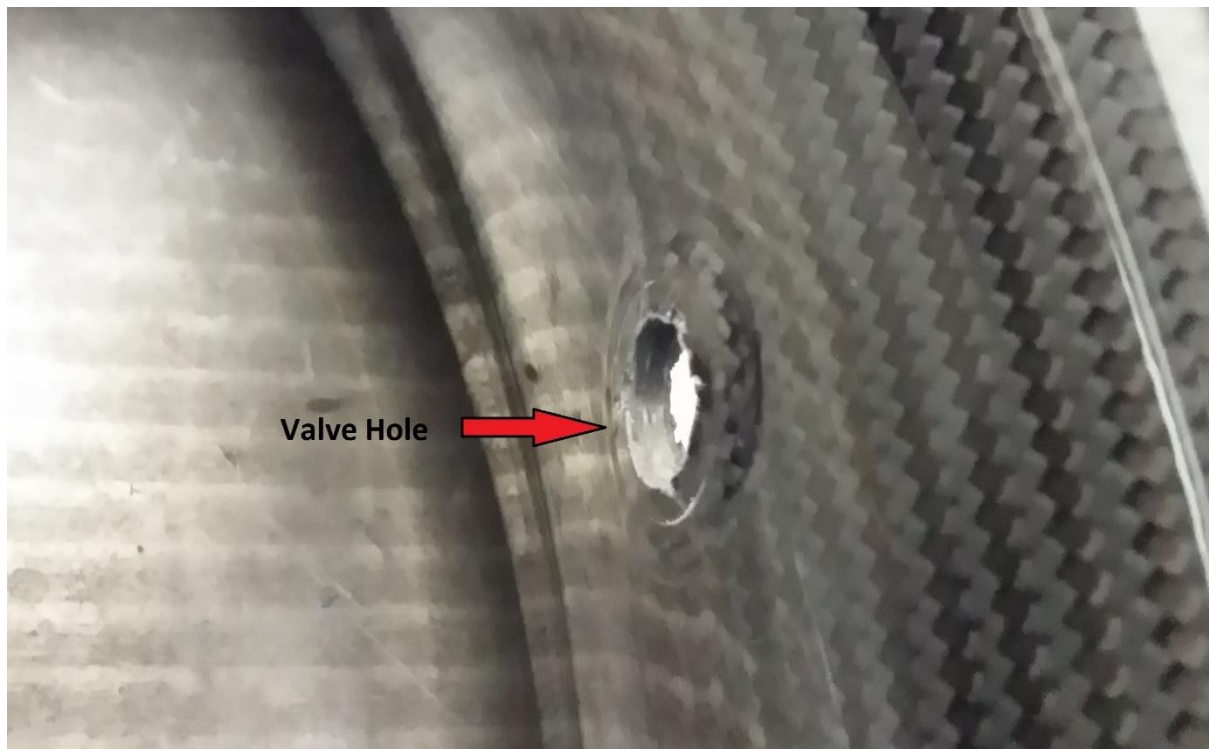


Figure 9: Valve hole in carbon wheel

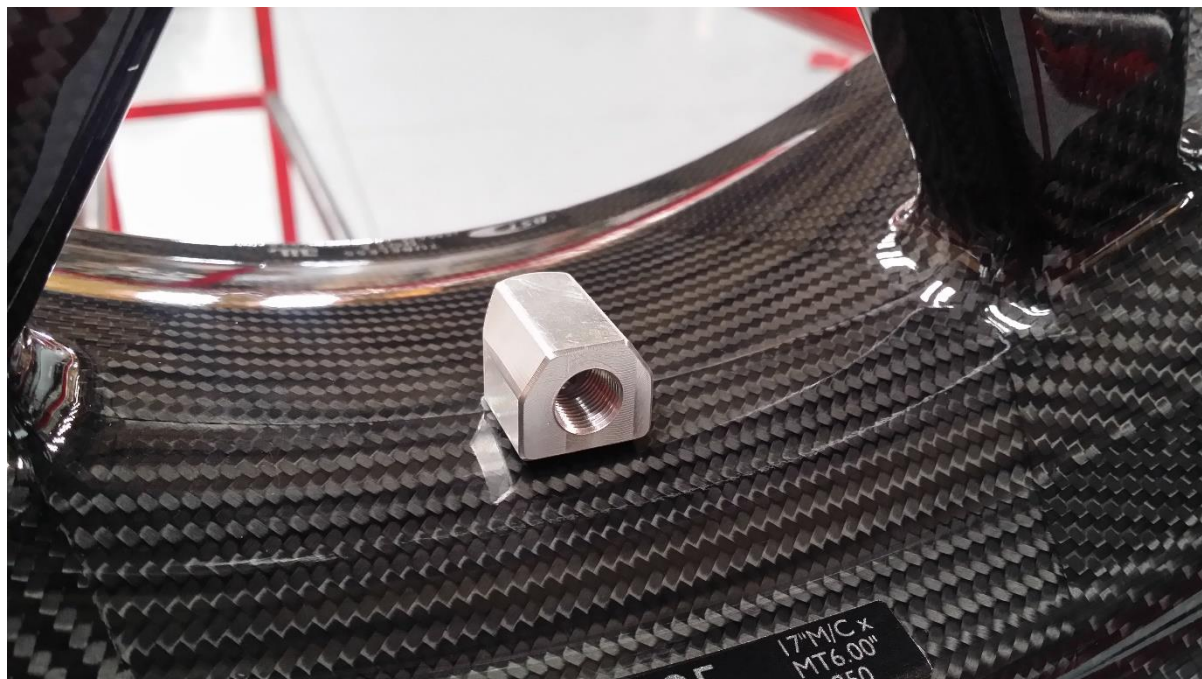


Figure 10: Valve adaptor on carbon wheel



Figure 11: Assembly Direction on the BMW offset rear wheel

- 10.) Place the TPMS sensor on the rim side of the rim and thread the retaining bolt into the valve stem. Using a 19 spanner on the sides of the valve adaptor, tighten the retaining bolt to 5 Nm securing the sensor to the wheel



Figure 12: TPMS assembled onto rim

- 11.) Fit the tyre to the rim paying special attention the TPMS assembly.
- 12.) Pressurise to 3 bar and allow tyre to stand for 1 hour, checking the air pressure every 30 min to verify that there are no leaks. Once completed and no air leaks are found, the wheel can be fitted to the bike.