

POWER COMMANDER V

20-22 Kawasaki Z H2 Installation Guide

PARTS LIST

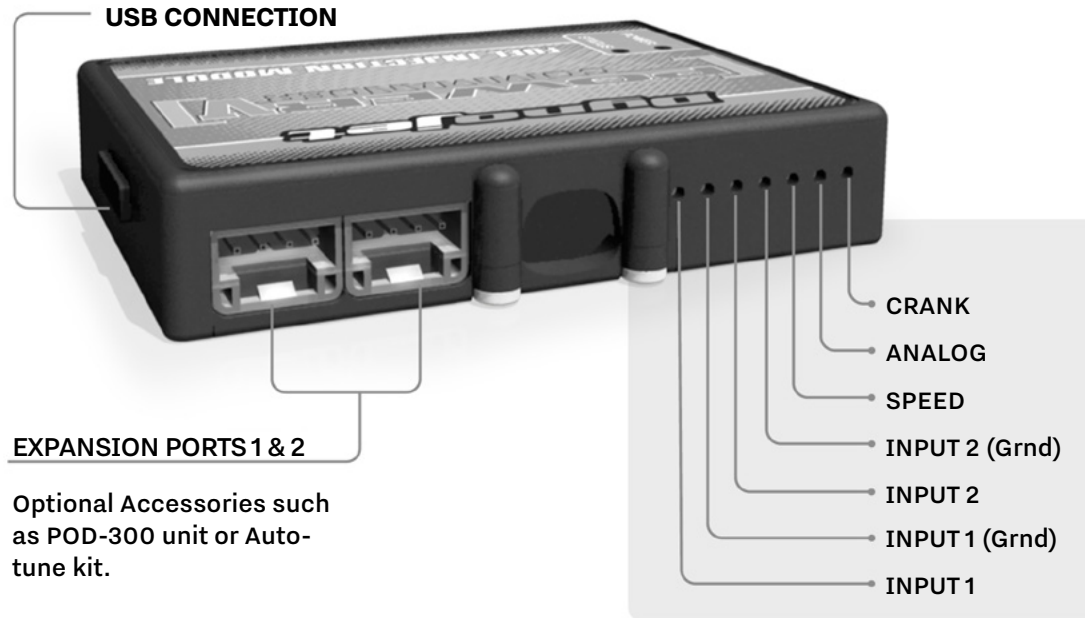
- 1 POWER COMMANDER V
- 1 INSTALLATION GUIDE
- 1 USB CABLE
- 2 VELCRO STRIPS
- 2 DYNOJET DECALS
- 2 POWER COMMANDER DECALS
- 1 ALCOHOL SWAB
- 2 POSI-TAPS

PLEASE READ ALL DIRECTIONS BEFORE STARTING INSTALLATION

FOR ADDITIONAL SUPPORT, AN INSTALLATION VIDEO CAN BE FOUND [FOLLOWING THIS LINK](#) OR THE QR CODE SHOWN BELOW:



POWER COMMANDER V INPUT ACCESSORY GUIDE



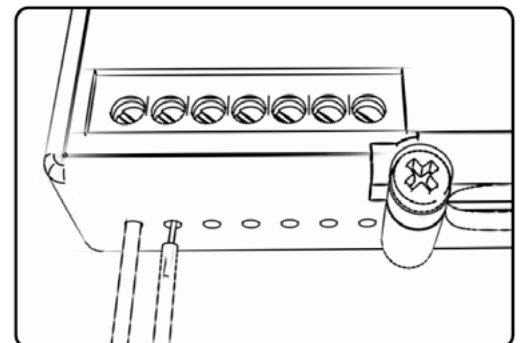
ACCESSORY INPUTS:

- Map -** (Input 1 or 2) The PCV has the ability to hold 2 different base maps. You can switch on the fly between these two base maps when you hook up a switch to the MAP inputs. You can use any open/close type switch. The polarity of the wires is not important. When using the Autotune kit one position will hold a base map and the other position will let you activate the learning mode. When the switch is "CLOSED" Autotune will be activated.
- Shifter-** (Input 1 or 2) These inputs are for use with the Dynojet quickshifter. Insert the wires from the Dynojet quickshifter into the SHIFTER inputs. The polarity of the wires is not important.
- Speed-** If your application has a speed sensor then you can tap into the signal side of the sensor and run a wire into this input. This will allow you to calculate gear position in the Control Center Software. Once gear position is setup you can alter your map based on gear position and setup gear dependent kill times when using a quickshifter.
- Analog-** This input is for a 0-5v signal such as engine temp, boost, etc. Once this input is established you can alter your fuel curve based on this input in the control center software.
- Crank-** Do NOT connect anything to this port unless instructed to do so by Dynojet. It is used to transfer crank trigger data from one module to another.

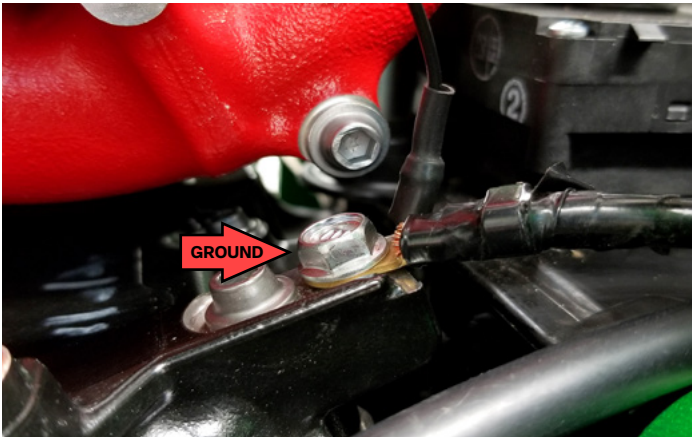
WIRE CONNECTIONS:

To input wires into the PCV first remove the rubber plug on the backside of the unit and loosen the screw for the corresponding input. Using a 22-24 gauge wire strip about 10mm from its end. Push the wire into the hole of the PCV until it stops and then tighten the screw. Make sure to reinstall the rubber plug.

NOTE: If you tin the wires with solder it will make inserting them easier.

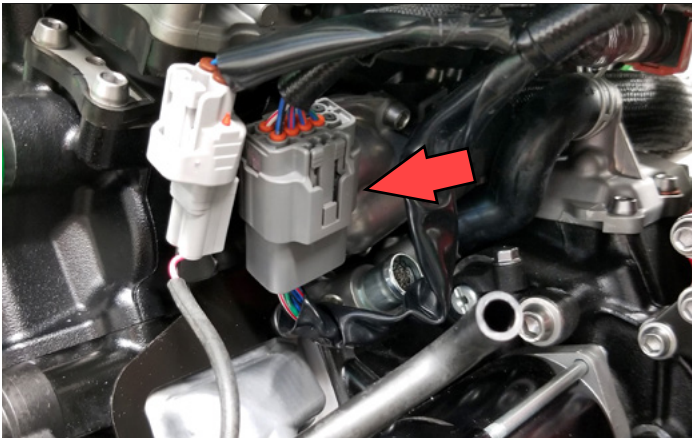


INSTALLING THE POWER COMMANDER V



CONNECT GROUND

- 1 Remove both seats, the fuel tank, and any associated covers, etc.
- 2 Lay the PCV in the tail section and route the harness down the left side of the frame going towards the engine.
- 3 Attach the ground wire of the PCV to engine ground terminal bolt located on the rear left of the engine near the red supercharger inlet.



UNPLUG MAIN HARNESS

- 4 Unplug the stock wiring harness from the throttle body sub harness.

This is a GREY, 10 pin connector at the rear of engine attached to the water hose fitting cover bolts (supercharger inlet removed for clarity).



CONNECT PCV

- 5 Plug the PCV in-line of the stock wiring harness connectors.
- 6 Route the rest of the PCV harness to the right side of the frame.

INSTALLING THE POWER COMMANDER V

- 7 Unplug the throttle position sensor connector from the throttle body.

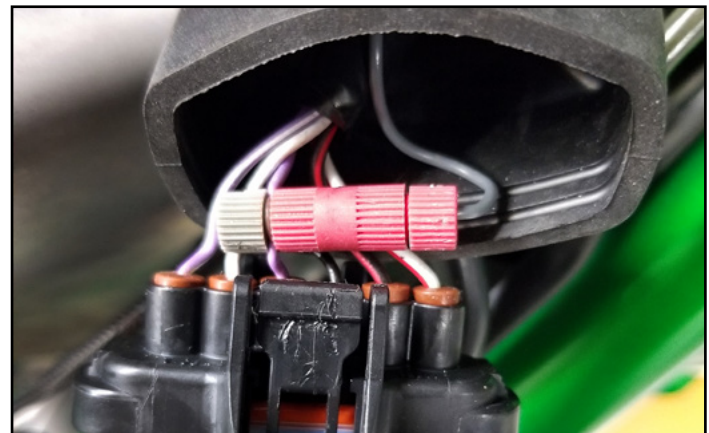
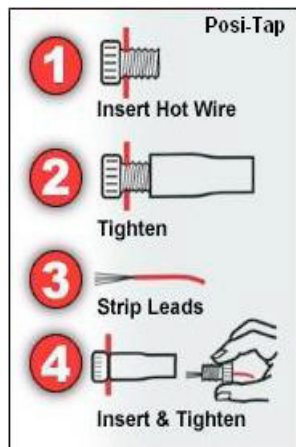
This connector is on the right side of the throttle body.



UNPLUG TPS

- 8 Using the supplied Positap attach the GREY wire from the PCV to the stock PURPLE wire of the TPS harness.

- 9 Plug the TPS harness back onto the throttle body.



GREY WIRE TO TPS

- 10 Unplug the stock crank position sensor connector.

This is a BLACK, 2 pin connector located on the front right side of the motorcycle near the #4 stick coil.



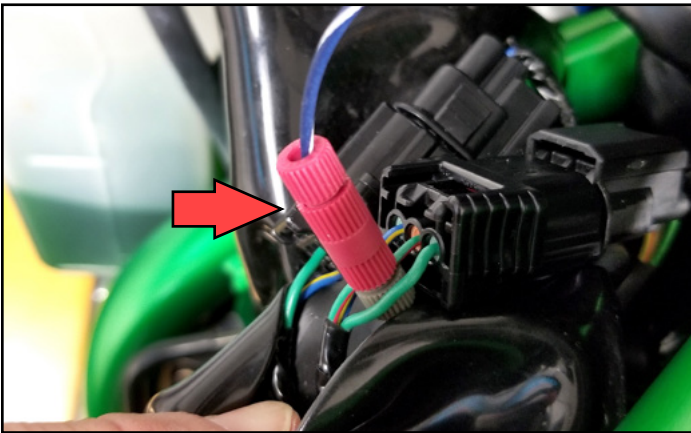
UNPLUG CPS

INSTALLING THE POWER COMMANDER V



CONNECT TO THE CPS

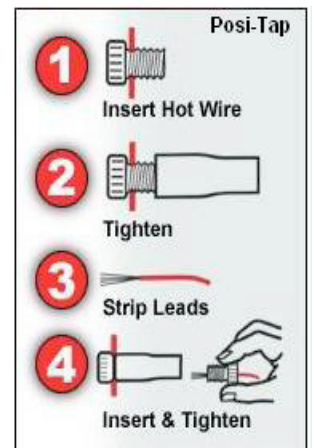
- 11 Connect the PCV in-line of the stock CPS and wiring harness.



CONNECT TO THE GEAR POSITION SENSOR

- 12 Using the supplied Positap connect the BLUE/WHT wire of the PCV to the GREEN/RED wire of the stock gear position sensor.

This is a BLACK, 3 pin connector on the top left side of the main wiring harness. This step does not need to be done if you do not plan on making any adjustments dependent on gear position.



- 13 Secure the PCV in the tail section using the supplied Velcro.
- 14 Reinstall both seats, the fuel tank, and any associated covers, etc.



SECURE THE PCV



PUSH THE LIMIT

2191 MENDENHALL DRIVE, NORTH LAS VEGAS, NV 89081 - 800-992-4993 - DYNOJET.COM

© 2021 DYNOJET RESEARCH ALL RIGHTS RESERVED