

## HAYABUSA (99-20) OIL PAN BAFFLE INSTALLATION INSTRUCTIONS

The Brock's Performance oil pan baffle for the Suzuki Hayabusa is designed to eliminate oil starvation during hard acceleration and wheelies to prevent engine damage. The oil pan baffle works with the factory and aftermarket oil pans

### Check Package Contents:

#### The Package Contents Include:

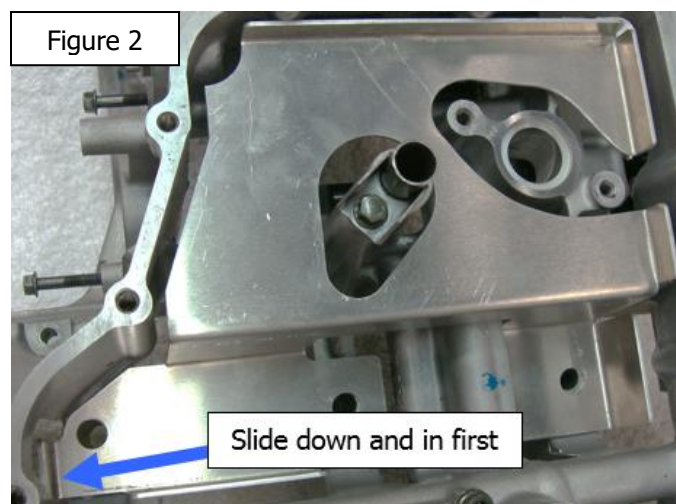
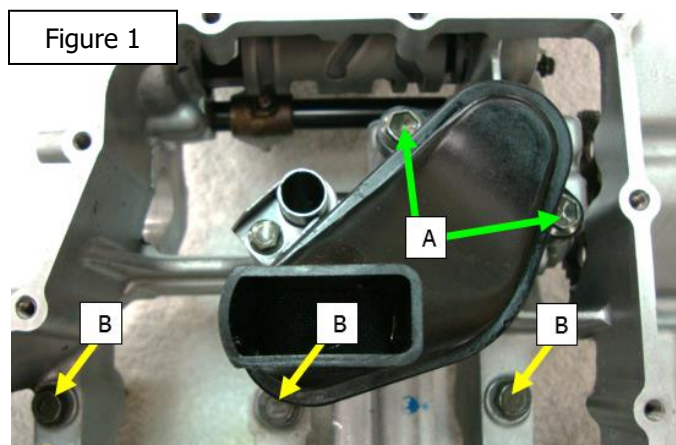
1. One (1) One Pan Baffle

If your package contents differ, please contact Brock's Performance at 937-912-0054.

For additional installation support please refer to the OEM service manual.

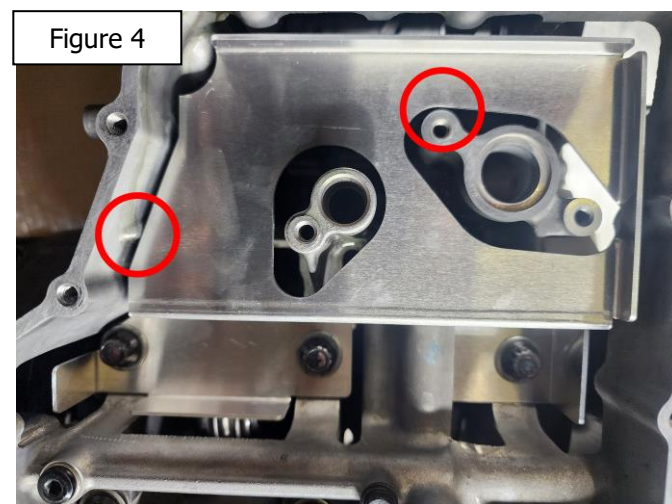
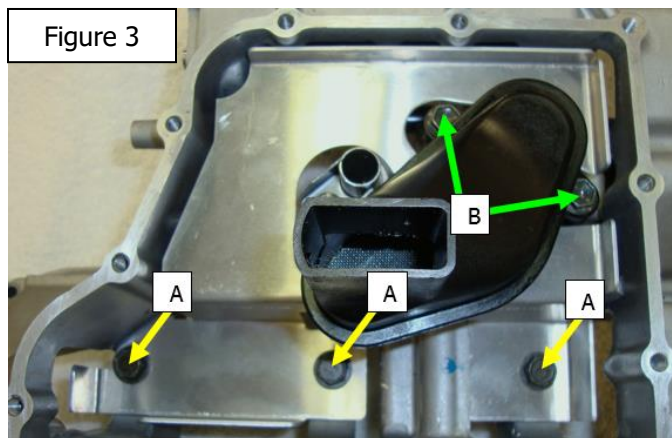
### Instructions:

1. Support the bike using a wheel stand or lift.
2. Remove side fairings, exhaust system, and drain oil.
3. Remove the left oil cooler line from the front of the oil pan. Be careful with the O-ring, it will be reused.
4. Remove (14) bolts securing oil pan and remove pan. It may need to be tapped with a rubber or plastic mallet lightly to break free. **Do not pry on oil pan or damage of sealing surfaces may occur.**
5. Clean gasket surfaces of oil pan and crankcase with solvent (brake parts cleaner) or gasket remover. Gasket surfaces must be clean and oil free to have a leak free installation. **Do not scrape surfaces with razor blade or other sharp tools, damaging the gasket surfaces will result in oil leaks.**
6. Remove oil strainer tube and clean mounting surface. Be careful with the O-ring, it will be reused (Fig 1-A).
7. Remove three (3) rear crankshaft journal bolts (Fig 1-B).
8. Install oil pan baffle as shown. Insert baffle in at an angle beginning with end shown (Fig 2).
9. Apply clean motor oil to the threads and under head of the crankshaft bolts. Insert bolts and torque to 13.0 lb-ft (17.6 N·m), then to 23.0 lb-



ft (31 N·m) in 5 lb-ft (6.8 N·m) increments beginning with middle bolt (Fig 3-A).

10. Clean the oil strainer tube bolts and apply blue threadlocker. Apply a small amount of grease to the oil strainer tube O-ring and insert into the boss.
11. Install the oil strainer tube and torque the bolts to 7.0 lb-ft (9.5 N·m) (Fig 3-B).
12. Ensure proper clearance between the oil strainer tube/oil pan baffle and between the oil pan baffle/engine casing in the areas shown (Fig 4). Clearance oil pan baffle as necessary to eliminate contact in these areas.
13. Re-install the oil pan and gasket. Note: The old gasket can be reused if undamaged
14. Torque the mounting bolts to 7.0 lb-ft (9.5 N·m) in a diagonal pattern.
15. Replace the left oil cooler line and torque the bolts to 7.0 lb-ft (9.5 N·m).
16. Replace exhaust system and lower fairings.
17. Fill the crankcase with motor oil. Brock's Performance recommends [Alisyn Synthetic Motor Oil](#) for maximum performance and protection. **Fill the oil to the top of the window if desired**, no power loss occurs with the oil at this level.
18. Start engine and check for oil leaks. Check oil level after running and top off as necessary.



**WARNING: IMPROPER INSTALLATION MAY RESULT IN OIL LEAKS WHICH MAY DAMAGE ENGINE OR CAUSE AN ACCIDENT. ALWAYS CHECK FOR LEAKS AFTER WARMING ENGINE. BROCK'S PERFORMANCE PRODUCTS WILL NOT BE RESPONSIBLE OR LIABLE FOR ANY INJURY OR DAMAGE CAUSED BY IMPROPER INSTALLATION, MISUSE, OR USE OF THIS PRODUCT FOR ANY OTHER PURPOSE.**

**ALL BROCK'S PERFORMANCE PRODUCTS ARE DESIGNED FOR CLOSED-COURSE RACETRACK USE ONLY!**

For more information on Brock's Performance Warranty and Terms and Conditions:

**BrocksPerformance.com > Brock's Support > Customer Service > Terms and Conditions**

For Questions and Comments:

**BrocksPerformance.com > Brock's Support > Customer Service > Contact us or call 937-912-0054**