



[Brock's Performance • 4064 E. Patterson Road • Dayton, OH 45430 • Phone: 937-912-0054 • Fax: 937-912-0062](#)

## HAYABUSA (99-20) 6 POSITION CLUTCH LEVER CAM INSTALLATION INSTRUCTIONS

**The Lever Cam is a multi-purpose adjustment device, which allows the stock clutch lever to be fine-tuned for the needs of the Sportbike Drag Racer.**

### Check Package Contents:

#### *The Package Contents Include:*

1. One (1) Lever Cam
2. One (1) Ball Bearing

**If your package contents differ, please contact Brock's Performance at 937-912-0054.**

***For additional installation support please refer to the OEM service manual.***

### Instructions:

1. Support the bike using a wheel stand or lift.
2. Place a large towel or blanket under the clutch side of the bike (this is to catch the spring-loaded ball).
3. Adjust the OEM lever cam to position #4.
4. Insert a dulled X-Acto blade or something similar between the OEM lever cam and the clutch lever to press the ball back into the pocket in the lever.
5. While pressing down on the ball, pull the clutch lever away from the bars and push the OEM lever cam towards the exit direction.

**Caution:** The OEM spring-loaded ball will exit the pocket. Wear safety goggles during this step. A spare ball is included in case it is lost during disassembly.

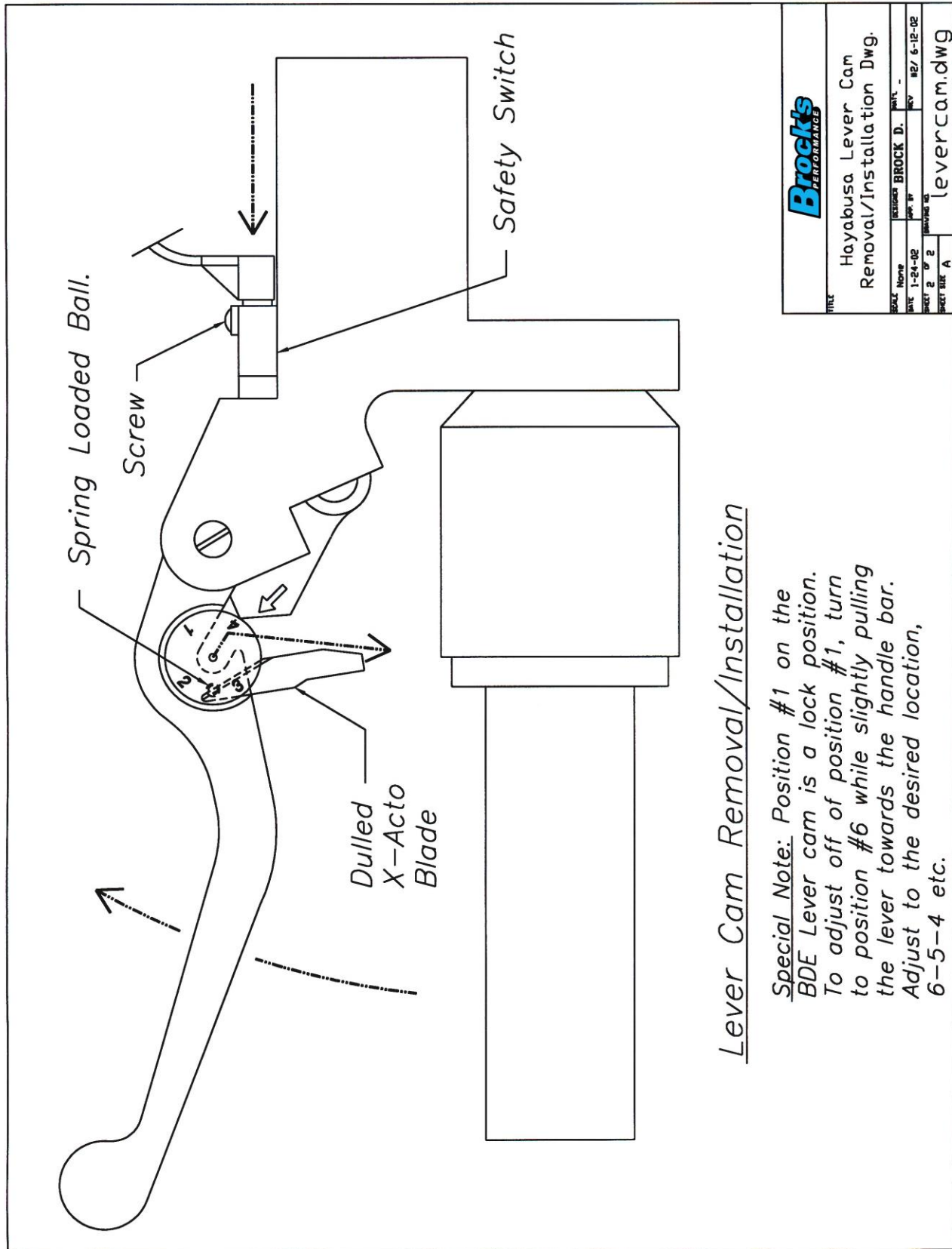
6. After the OEM lever cam, ball, and spring are removed set the ball and spring aside for a moment. Dry assemble the 6 position Lever Cam by aligning position number 6 with the arrow and sliding the Lever Cam into position while holding the lever away from the bar.
7. Remove the 6 position Lever Cam and re-install the spring into the pocket in the lever. Place the ball on top of the spring and hold it in place while performing the action described above. The 6 position Lever Cam was designed to install far easier than the OEM cam was to extract. The spring and ball hold the 6 position Lever Cam in place, just like the OEM lever cam.
8. Check the 6 position lever cam operation by turning it to the different positions while feeling the click.
9. Set the 6 position lever cam to the desired position.

### Tips on setting the Lever Cam Position:

- Positions 1-3 are for use with [Brock's Clutch Cushion Kit](#) or for riders with large hands.
- Positions 4-6 are dedicated to positioning the clutch lever closer to the handlebars (vs. OEM lever cam) which will allow for an easier pull of the clutch lever and work better for riders with small hands.
- If the clutch lever cam does not stay in the desired position, the clutch lever may be worn out or damaged, replace the lever assembly.
- When operating in position #5 or #6 on some occasion the bike may not start. Try pulling on the clutch lever with a tighter grip. If that does not start the bike adjust the safety switch (see drawing for details).



**Warning: DO NOT attempt to ride the motorcycle unless you are positive that the 6 position lever cam is properly installed. Failure to properly install could lead to serious injury and/or damage to the bike.**



<b>Brock's</b> PERFORMANCE	
TITLE Hayabusa Lever Cam Removal/Installation Dwg.	
DESIGNED BY	BROCK D.
DATE	1-24-02
REV	12/ 6-12-02
SHEET	2 OF 2
DRAWING NO.	levercam.dwg

Lever Cam Removal/Installation

Special Note: Position #1 on the BDE Lever cam is a lock position. To adjust off of position #1, turn to position #6 while slightly pulling the lever towards the handle bar. Adjust to the desired location, 6-5-4 etc.

**ALL BROCK'S PERFORMANCE PRODUCTS ARE DESIGNED FOR CLOSED-COURSE RACETRACK USE ONLY!**

For more information on Brock's Performance Warranty and Terms and Conditions:  
**BrocksPerformance.com > Brock's Support > Customer Service > Terms and Conditions**  
 For Questions and Comments:  
**BrocksPerformance.com > Brock's Support > Customer Service > Contact us or call 937-912-0054**